

# The Presby Post



A PUBLICATION OF THE STATE COLLEGE  
PRESBYTERIAN CHURCH  
PENNSYLVANIA



SEPTEMBER 2009

## *Inside This Issue*

Parking Reminders	2
All in the Family	3
Christian Education Opportunities	4
New Members in August	5
Book of Hours Workshop	6
Chancel & Handbell Choir	7
LOGOS Registration	7
Krislund News	8
September Calendar	9

**Deadline for  
October PresbyPost  
Friday, September 11, 2009**

Deadline for November PresbyPost  
Friday, October 16, 2009



## Students Heading Home ...

...their "home-away-from-home" here at SCPC!

As the town fills up again and the semester rolls to a start, we remember that many of the students who come to PSU will be worshipping with us. Let's make sure they find our church family welcoming and warm. You just may be the face of Christ that they need to see and experience. So, take a few minutes each week and get to know one of the students in our pews. Introduce yourself and ask them a little about themselves. And, if you'd like to take another step, make sure they know about the college-age ministries of SCPC (Westminster Presbyterian Fellowship) and offer them a brochure (they're in the sanctuary). Or, find Diana and introduce them. God has blessed us richly, now let us be a blessing!

### **PSU Student Welcome Activities**

Join us in celebrating the new semester! Students - new & returning, graduate & undergraduate - are invited to come enjoy some fun and fellowship, hosted by Westminster Presbyterian Fellowship (A Penn State Student group, associated with SCPC):

**Thursday, 8/27** is a COOK-OUT @ SCPC, beginning at 6:00 PM

**Sunday, 8/30** is a TAIL-GATE @ SCPC, following worship

**Tuesday, 9/1** is an ICE CREAM SOCIAL, from 7:00-8:00 PM in Pasquerilla Spiritual Center

Regular College programming begins with Lunch @ Redifer on Tuesday, 8/25.

**Get on-line to learn more about what's going on: [www.scpresby.org/programs](http://www.scpresby.org/programs) .**



## PARKING LOT RULES



### Parking Reminders

As we begin a new program year, please keep these parking regulations in mind:

**First National Bank (formerly Omega) Parking Lot** - First National Bank graciously allows us to park in their parking lot adjacent to the drive-thru branch on Allen Street on weeknights after 6:00 PM and on Sundays only. At all other times, the spaces are reserved for bank employees. Unauthorized cars will be towed at the owner's expense. If you are coming to the church to drop off or pick up your child at Stay and Play or for an after school/early evening weekday program, please use the church parking lot, the municipal lot, or the Beaver Avenue parking garage.

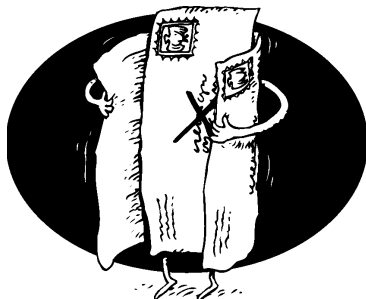
**State College Post Office** - parking is also not permitted in the Post Office Parking Lot or the 15 minute parking spaces on Fraser Street in front of the Post Office that are provided for the use of postal patrons --Evenings and Sundays included (the lobby where PO Boxes are located is open 24/7). Please use the church lot, the municipal lot next to the church, the Beaver Avenue or Fraser Street Parking Garages, or any other areas designated by the Borough for public parking.

**Beaver Avenue Parking Garage** - Parking is free on Sundays in the Beaver Avenue Parking Garage, except for a few special event weekends: Penn State home football game weekends, Spring Penn State Graduation weekend, and the July Arts Festival.

On these weekend Sundays you can pick up a parking voucher at the Welcome Desk which will pay for your parking. There is no charge to the church for this service. All other Sundays, when there are no special events in the community, no parking voucher is needed.

### Let us Know When You Will be Away

We have been receiving a lot of returned PresbyPost Newsletters from the Post Office from those of you who spend your winters (or springs/summers/falls) away from State College. Unfortunately, the Post Office now requires us to request return service on bulk mail and charges us 44 cents for each PresbyPost (and any bulk mail) that comes back to us marked "Temporarily Away." If you regularly spend a block of time away, we can temporarily change your address in the church database so you won't miss any news from home and we won't get your mail returned to us with a charge. When you are notifying the Post Office to hold your 1st Class mail, please let us know the temporary address and the dates you plan to leave and return and we can take it from there.



# September Services and Sermons

Taizé Worship every Wednesday, 5:00 PM  
in the Martin Room.

**Sunday, September 6** - One service at 10:00 AM  
23rd Sunday in Ordinary Time  
Charles Curley, preaching

**Sunday, September 13** - 9:00 and 11:15 AM  
24th Sunday in Ordinary Time  
Charles Curley, preaching

**Sunday, September 20** - 9:00 and 11:15 AM  
25th Sunday in Ordinary Time  
Charles Curley, preaching

**Sunday, September 27** - 9:00 and 11:15 AM  
26th Sunday in Ordinary Time  
Charles Curley, preaching

## State College Presbyterian Church Staff

**Pastor** - Charles Curley  
ccurley@scpresby.org

**Associate Pastor** - Joel Blunk  
jblunk@scpresby.org

**Director of Education and Program** - Deannine Shipman  
dshipman@scpresby.org

**Director of Music Ministry** - Ned Wetherald  
ned@scpresby.org

**Associate in Ministry for College Age Ministries**  
Diana Malcom  
dmalcom@scpresby.org

**Program Associate** - Martha Trout  
mtrout@scpresby.org

**Mission Associate** - Kim Hunziker  
khunziker@scpresby.org

**Stay and Play Director** - Laura Steager  
lsteager@scpresby.org

**Church Secretary** - Janet Heasley  
office@scpresby.org

**Building Manager** - Paul Sheets

**Assistant Custodian** - Nelson Hite

**Weekend Custodian** - Russell Bush

**Treasurer** - Sharon Kasting  
treasurer@scpresby.org

**Assistant Treasurer** - Anne Thomas

**Office Hours** - 9 a.m. - 4 p.m.  
Phone (814)238-2422 Fax (814)238-3524  
**Website** - www.scpresby.org

# All in the Family

Sympathy of the congregation to friends and family on the death of:

**Jean McKinstry**, July 13, 2009

**James Pettingill**, July 29, 2009 in Texas

**Wendy Jones'** stepmother's husband in Seattle.

Congratulations of the congregation on the marriage of:

**Val Freeman** and **Tom Harper**, August 1, 2009

Congratulations of the congregation on the baptism of:

**Emma Jade McLaughlin**, daughter of **Lisa J.**

**McLaughlin**, August 9, 2009

**Margaret Emerson McLaughlin**, daughter of **Douglas and Gretchen McLaughlin**, August 9, 2009

**Max Sutterlin** has earned the highest rank of the Boy Scouts of America, the Eagle Scout Award. Troop 32 will conduct a Court of Honor at 2:00 PM, September 27 here at SCPC to honor Max and present his Eagle Scout Award. You will remember that Max's Eagle project involved the construction of handicapped access to Westminster Hall in our church building. Max is the son of Bob and Jane Sutterlin.

## Spring Creek Presbyterian Church

An Allen Digital Organ was presented on behalf of SCPC, a daughter congregation, in celebration of reopening of the restored building, August 30, 2009. As a fundraiser, an instrumental CD was created by friends of the Spring Creek Presbyterian Church and is available in the SCPC office for \$15.00. All proceeds will go to the Restoration Fund at Spring Creek Presbyterian Church.

## GIFT In September

GIFT will begin again on Friday, September 11. We will meet in the Fireside room at 11:30. GIFT stands for Gathering In Fellowship Together. We are a group of women of all ages who enjoy reading books. We read books of all kinds and discuss them at our meetings. We bring our own lunch and coffee is always served. We meet every other Friday throughout the school year. Our next meeting in September will be Friday the 25th. If you would like more information about GIFT please contact Deb Becker at 692-7572 or feel free to come to one of our meetings.



**ANNUAL LOGOS PICNIC**  
 Tuesday, September 15, 5:30 PM  
 Spring Creek Park  
 Last names A-M bring side dishes,  
 N-Z bring dessert  
 All LOGOS families, friends,  
 and volunteers are invited.

## Young at Heart

Young at Heart will meet Friday September 18, 2009 in the Social Hall. The program will be musical and feature Deannine Shipman, our Director of Education and Program. Come at 5:00 PM for social time and potluck dinner at 5:30. Bring a covered dish of meat, vegetable, salad or dessert and your own table service. Newcomers are always welcome. Don't forget to wear your name tag!

## Women's Bible Study Opportunity

A study of the book of Joshua begins Thursday, August 20 at 1:00 PM at Janice Johnson's home. The study will be challenging and enriching as we learn of the use and misuse of the Biblical texts in the current conflicts of the Middle East. All women are invited to participate. This Bible Study group meets the third Thursday of every month.



## Audio Sermons Now on SCPC Website

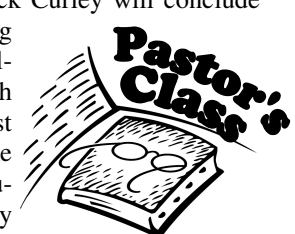
Sermons from 2009 worship services are now available in mp3 format (downloadable audio file) on the SCPC website. Sermons will be put on the website on a monthly basis. Visit [www.scpresby.org](http://www.scpresby.org) and click on the "worship" link on the left side of your screen, then "sermons." Scroll down until you see "Sermons - Audio Versions" and choose (click on) the sermon you wish to listen to. As a new month of sermons is put on the website, the oldest month of sermons will be taken off.



Also, the option of worship services on CD is now available (instead of cassette tape). Sermons from mid-2007 to present can also be put on CD. If you are interested in having a permanent copy of a particular service or sermon or a selection of sermons (3-4 sermons per CD), please contact the office. A small fee of \$2.00 per CD has been established to cover costs.

## Pastor's Class

The Fall 2009 Pastor's Class will begin on Thursday October 8 and continue through Thursday December 10. The class is lecture format and meets in Westminster Hall from 10:00am to 11:00am. In 2009-2010 Pastor Chuck Curley will conclude the series "Years of the Church: Turning Points in Protestant Christianity" by following the church from the Seventeenth Century Puritans to the Twenty-First Century -- with special emphasis on the Presbyterian Church during those centuries. Anyone interested in church history is welcome to attend -- even if you have not taken part in the class in previous years.



## Support Throughout the Year

The College-Age Ministry Unit would like to collect the names, addresses and emails of any college-age young person so that they may be remembered and supported throughout the year. Please forward the information to Diana Malcom, Associate in Ministry for College Age Ministries, at [dmalcom@scpresby.org](mailto:dmalcom@scpresby.org) or call the church office at 238-2422.

## Adult Education for September

Welcome to a fresh season of Adult Ed offerings! We believe you will find the variety of sessions to be of interest. They should help all of us broaden our spiritual and informational horizons. All classes run from 10:15-11:00 AM. Always check a particular week's Sunday bulletin for any updates. See you in class!

Class Offerings	September		
	13	20	27
Wilderness Sojourn	x		
Guidance to Parents on "Sexting"		x	
The Practice of Praying for Others		x	x
The Roots of the Arab/Israeli Conflict			x

### Class descriptions:

**"Wilderness Sojourn: More Stories from Joel's Sabbatical"** We are aware that Joel Blunk's three-month sabbatical in the spring proved to be an engaging and deeply meaningful experience for him. Some aspects of his experience have been expressed in his recent sermons. There are still more elements of spiritual uplift that Joel would like to share with us. This inspiring session will be in Westminster Hall.

**"Guidance to Parents on 'Sexting'"** Michael Madeira, District Attorney for Centre County, offers this presentation similar to ones to be given to various groups in local school districts. He will cover the legal implications of "sexting" that can result from such practices, and how these implications can impact a student's future. Mr. Madeira will also provide advice to parents on how best to encourage appropriate use of today's continually changing methods of student communication. This topical class meets in Westminster Hall.

**"The Practice of Praying for Others"** As quoted by Anita Thies, "When a friend, family member, or world situation cries out for prayer, where do you start and what difference does it make? This three week class will introduce the principles and practice of intercessory prayer based on Jesus' teaching in Luke 11:5-8 and on a classic workbook by Maxie Dunman. Join Anita Thies, a leader of our church's Wednesday Prayer Group, at 10:15AM in Room 10.

**"Understanding the Roots of the Arab/Israeli Conflict"** Alan Benjamin will discuss this conflict in a three-week series. This is not a simple issue. It has a long and complex story based in the cultures, geography, and history of the region. In attempting to understand this conflict, we must be able to see it within the much larger context of Jewish and Arab life, which he will address. This informative class will meet in Westminster Hall.

## Adult Education Offerings



## Sunday Morning Programs

Our Sunday morning programs all start back up with our regular 10:00 AM schedule on Sept. 13th. There are lists of Sunday School classes posted around the building to help you, and the classes are listed below as well. Many of our rooms upstairs got some fresh paint this summer, so it should be a nice surprise for the children!

Creative Movement and Music for 3's - K children starts back up on Sept. 13th in Westminster Hall, and Children and Worship Class (1st - 2nd Grade) starts back up in Room 11. Both of these programs occur during the 2nd half of the first worship service.



### Sunday School Classes:

Childcare in Rooms 100, 101  
 Threes/Fours - Room 103  
 Kindergarten - Room 203  
 1st Grade - Room 209  
 2nd Grade - Room 210  
 3rd Grade - Room 208/211  
 4th Grade - Room 206  
 5th Grade - Room 12 (lower level)  
 Middle School - Fireside Room  
 Sr. High - Tower Room

## Programs

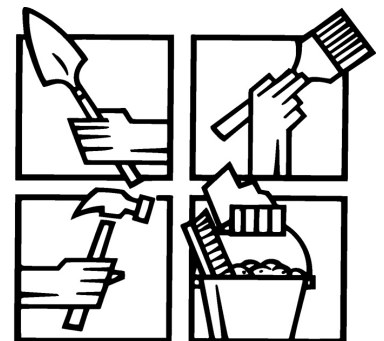
### Children's Offering

As we start back to our school year schedules and two worship services in September, it's a good time to remind your children that they too can give some money to support the church and the community of believers. We have a church bank just for the kids to use!

We hope that all parents will encourage their children to bring in their offering to the church on Sundays. We have a nice Children's Offering Bank in the back of the sanctuary on the table with the children's bulletins. Children can put their offering in the bank as they arrive for church. The children can see money in the bank since the top is clear. Let's fill up the bank and share God's love with others!

### Krislund Work Day

Individuals and groups of skilled and unskilled volunteers are invited to join us for our Annual Fall Work Day on Saturday, October 3rd from 9 to 4 with lunch at 12:30. We have a variety of indoor & outdoor projects including painting, wood splitting, fall cleanup and many more. To aid in planning, please RSVP to the camp office at 814-422-8878 or via email to [info@krislund.org](mailto:info@krislund.org).



## KRISLUND WORKDAY

## New Members – August 2009

**Rod and Dawn Datt** join us by Letter of Transfer from Great Island Presbyterian Church in Lock Haven, PA. Dawn grew up in Loganton, PA in the Methodist Church and began her life as a Presbyterian in Butler, PA when she and Rod lived there. They moved to Lock Haven, where she worked for Lock Haven University, and they joined Great Island Presbyterian Church. She made the move to PSU (Director of Administrative Services in the College of Arts and Architecture) and moved from Lock Haven to Howard, PA to be closer to work. Dawn's hobbies include reading and gardening. They have been attending SCPC for about a year. Rod was raised Presbyterian (ordained as both a Deacon and an Elder) and has been with Supelco for 25 years where he is VP of Administration in Accounting. Rod enjoys golfing and gardening. They have 2 grown children, a son who works for the Navy in Washington, DC and a daughter who just graduated from college. They are now adjusting to life without kids. They appreciate all of the activities and programs here and the children's activities.

**Ryan Gilmore** joins by Letter of Transfer from Emmanuel Presbyterian Church in Erie, PA and **Stefanie Gilmore** joins by Reaffirmation of Faith. Ryan was raised in the Presbyterian Church and has always been very active in the church. Stefanie was raised in the Catholic Church in Elwood City, PA. They met in 2004 at PSU Behrend. Ryan worked at GE in Erie while Stefanie was here in State College at Raytheon. Ryan made the move to State College in 2006 and now they both are Engineers at Raytheon. The newest member of their family, Kate who was born in May, is the reason they started looking for a new church home. They really like all the activities for young children and the mission opportunities that are available here. They have moved into their first house in Stormstown which is keeping them busy.

**Rodney and Dawn Datt**  
356 Two Mile Rd.  
Howard, PA 16841  
814-625-2419  
rdatt@sial.com (Rod)  
dmd27@psu.edu (Dawn)

**Ryan and Stefanie Gilmore**  
848 Smith Rd.  
Port Matilda, PA 16870  
814-639-0025  
regil0580@yahoo.com (Ryan)



## Krislund Paint-A-Building Program and Tree Planting Opportunities

Interested individuals, groups and churches are invited to participate in our Paint-A-Building program with the goal of re-staining or re-painting a number of buildings at Krislund. We would like to protect our Retreat Center, Office, Lower & Upper Lodges, Longhouses, cabins and other structures by starting this project soon. Each building takes about \$500 worth of stain/paint and several hundred hours of labor and we are searching for financial aid and/or donations of labor to accomplish this important task. If you'd like to help, contact Property Chair Kevin Lloyd at kevin.lloyd@me.com. Financial contributions may be sent to the camp office at 189 Krislund Drive, PO Box 116, Madisonsburg, PA 16852. Please note "Paint-A-Building" in the memo field.

The Property Committee has begun to plan for the re-foresting of camp grounds and we are soliciting help including: donating larger trees to be planted this fall, helping us locate a source for purchasing a large quantity of saplings to be planted next spring, financial contributions to offset the cost of the trees and organizations or groups that would be interested in assisting with the planting. Interested parties can contact Property Chair Kevin Lloyd at kevin.lloyd@me.com.

## Calling All Crafters

It's that time of year again, before you get busy with your crafts for your own holiday season, please consider making some crafts for the Presbyterian Senior Living at Windy Hill Fall Bazaar. This year the Bazaar is MUCH earlier than usual and will be held on Saturday, October 24, 9:00 AM - 2:00 PM.

We were delighted with the success of last year's bazaar. The Presbyterian Women's Auxiliary raised over \$5000 towards the benevolent care fund, and we hope we can count on you to help again this year..

We are grateful for the beautiful crafts, delicious baked goods, fudge, cheese balls and other contributions you have made in past years. We wanted to send a special thank you to the knitting elves of the church for their contributions last year and to the Presbyterian Women who donated the funds for the delicious sticky buns. They were a big seller in the "Sweet Shop". We also wanted to thank the college students for their dedication in making and packaging 50 cheese balls!



WPF making cheese balls

Popular items include "quiet books", hand made clothing, knitted or crocheted items, quilted items, artwork, needlework and woodwork, as well as other kinds of hand-made items. If you are unable to donate handmade items, but would like to contribute craft supplies, or monies to purchase supplies, please feel free to contact Diana Brenizer. Your talents and skills are needed to make this our biggest and best bazaar ever.

Please contact Diana Brenizer at 692-7703 if you are able to make any donations. We can accept craft items at any time, please leave them at the church office with your name and address on them, and mark them for the bazaar. If you are making a donation of craft supplies, we would need those donations sooner so our auxiliary members can make the craft items to sell before the bazaar. And...if you are able to donate baked goods, fudge, or candies, please notify Diana so she can make arrangements to pick them up Thursday evening, October 22, or Friday morning, October 23 so that they can be priced to sell on Friday when the auxiliary members are at Windy Hill setting up for the bazaar.

Your contributions insure our continued success of this important mission.

## Book of Hours Workshop Rescheduled

Our deepest apologies to those of you who marked your calendar for the August Book of Hours workshop, only to find it postponed! We are planning to do the Book of Hours January 15 and 16 when we feel more confident that folks will be able to attend. Look for more information about the upcoming workshop in subsequent PresbyPosts and other forms of announcements. In the meantime, there is a lot to do to prepare and make the workshop an even more meaningful experience!

**A brief description of the hours** - In the Christian monastic tradition, every day follows a rhythm of eight "Hours," which mark nuances of morning, noon, night, and between times. "Lauds" is the coming of the light, an opportunity to nourish your soul for the coming day. "Prime" - when you get to your workplace - allows you to make a deliberate beginning. "Terce" is a joyful mid-morning prayer break. "Sext" is a lunch-time meditation that renews commitment and fervor. "None" comes as shadows lengthen and you need a boost for the last hours of your work day. "Vespers" is an evening celebration, and "Compline" completes the cycle right before bed. Connecting the circle of Hours is "Vigils," the night watch.

**An opportunity to learn more** with an online retreat sponsored by Spirituality and Practice ([www.spiritualityandpractice.com](http://www.spiritualityandpractice.com)) and A Network for Grateful Living (ANG\*L), founded by Br. David Steindl-Rast ([www.gratefulness.org](http://www.gratefulness.org)). During this six-week retreat, you will receive emails on Mondays, Wednesdays, and Fridays. On Mondays, we'll introduce the traditional meaning of the Hours, starting with the key pivot points of dawn, noon, and dark. Wednesdays will give us a chance to expand our consideration and, as the retreat progresses, to introduce more Hours. You'll also have access to a private online Practice Circle, where we'll all discuss our experiences living these Hours. You can also ask questions of the retreat leaders, which will be addressed in the Friday emails.

Throughout this online retreat, we'll also encourage you to collect materials for each Hour that are meaningful to you, with the idea of creating your own Book of Hours that you can use for prayer. On Fridays, we'll share this project, pointing to your prayers, photos, poems, and quotes posted in the Practice Circle. We expect to collect quite a bounty of prayer prompts as our spiritual community builds over the weeks.

[www.spiritualityandpractice.com/ecourses](http://www.spiritualityandpractice.com/ecourses)

Six Weeks, September 14 - October 23 // \$39.95

Please contact Kim Hunziker ([hunzie@aol.com](mailto:hunzie@aol.com)) or another member of the Spiritual Formation Ministry Unit for more information

## Mission Out of the Closet

Calling all members & friends of SCPC who are working on behalf of area agencies in various volunteer positions: we want your names!

Have you been driving for Meals on Wheels for years, serving on the Youth Service Bureau Board of Directors, or collecting furniture for Interfaith Mission? Please let Kim Hunziker ([hunzie@aol.com](mailto:hunzie@aol.com) // 238-2422) know who you are and what you are doing by September 10th. She would like to maintain a comprehensive list of all the ways we are connected to our neighbors! In the October PresbyPost and on the MISSION bulletin boards, we will highlight & celebrate the commitments you have made to ministries & service beyond our walls!

## Report from Thailand!

Sarah, Rachel and I recently spent three weeks visiting Lance and Debbie Potter in Thailand. We were able to meet co-workers, friends and see the places of work and home. We saw the school where Lance and Debbie work and all kids attend, and played in the new gym designed by my dad, Taylor Potter. We were also able to go to a campground in the mountain jungles that missionaries, including the Taylor Potters, spent many vacations. It was wonderful to see the girls splash in the same pool that my dad, the designer, had helped build in 1961, and that Lance and I had played in so long ago.

The Potters are well. Riley recovered from Dengue Fever and Lance is playing basketball, volleyball, and surfing after his broken back!

The work Lance is doing at the school is evident and they all send well wishes, and glad tidings. They miss SCPC, the fellowship of friends and especially the sermons. Keep them in your prayers!  
-Dee Ann Wylie

## National Equality March October 11

On October 11, 2009 members of every race, class, faith, and community, who see the struggle for LGBT equality as part of a larger movement for peace and social justice, will convene in Washington DC to participate in the National Equality March. The purpose of the march will be to voice one single demand, equal protection for everyone in all matters governed by civil law in all 50 states. Members of SCPC will participate in the march. If you would like to join us, please contact Jean Riddle Collins @ [Jeanrcollins@yahoo.com](mailto:Jeanrcollins@yahoo.com) or 814-466-6839.

## Wisdom in the Wilderness

After hearing about Joel's sabbatical in nature, you are invited to an experience of your own: a wilderness sojourn right here in beautiful central Pennsylvania. Designed not to be strenuous, and for those with the flexibility to get away mid-week; the "young-at-heart" (senior adults; 55+) among us will explore the relationship between faith and nature - ours and the world around us - in an outdoor, comfortable setting.

In the process, we will consider questions like: What does elderhood mean today? What are my gifts to the church and the broader community? How can encounters with the more-than-human world help me be true to myself and God? How do I honor the "Christ-in-me" at this unique stage in my life?

The Spiritual Formation Ministry Unit invites you to join Joel and others for brief presentations, guided solo time in nature, and small-group discussions intended to help discover something about who we are in relationship to God, one another and the more-than-human world.

Mark your calendars! The Wisdom in the Wilderness retreat will be held at St. Joseph's Institute in Port Matilda ([www.stjosephinstitute.com](http://www.stjosephinstitute.com)) on October 13-15th. Please contact Joel for registration details.



## Are You Ready for LOGOS!!!

The SCPC LOGOS ministry is a four part, midweek program for 1st through 8th graders. The four parts are Family Time (a shared meal and tons of fun), Bible Study, Activity Time (games, crafts, projects, fun), and Worship Skills (preparing to lead worship). The 1-5 graders, called GECKOS, meet from 4:00-7:00 PM and the middle-schoolers, called CHRYSALIS, meet from 5:00-8:00 PM. Relationships are built, children and youth are nurtured into Christian discipleship, there is lots of laughter. All families of 1st through 8th graders are invited to join the fun.

### Registration

We are doing registration a little different this year. Registration forms are now available on our website ([www.scpresby.org](http://www.scpresby.org)) then click on "programs" then "children's ministry". A table will be set up in the Social Hall during Coffee Hour through September 6. Bring completed registration forms and fees or stop by and pick up registration form and we'll get you signed up. Parent Handbooks will be available for those returning completed registration forms.

The annual Parent Meeting will be held at the end of our first LOGOS night, Tuesday, September 22 - so come early to pick up your LOGOIDS and join us for a brief parent meeting that will be entertaining. (We're not supposed to tell, but think "A long time ago in a galaxy far, far away...")

### Upcoming Events

- ◆ September 12 - Chrysalis 8th Grade Overnight
- ◆ Tuesday, September 15 - Annual LOGOS Family Picnic at Spring Creek Park, 5:30 PM, Last names A-M bring side dishes. Last names N-Z please bring dessert.
- ◆ Tuesday, September 22 - First LOGOS Night!

## Presbyterian Women News

Your are invited to the State College Presbyterian Women's  
**Fall Luncheon with Thank Offering**



Monday, October 5, 2009  
Centre Hills Country Club  
11:00 AM - Fellowship time  
11:30 - Worship Service  
12:00 PM - Luncheon



1:00 - "Helping Hands of Centre County"  
presented by Anne Ard

Menu - Your choice of entree (chicken Caesar salad with rolls or turkey bacon grinder), raspberry mousse cake, coffee and tea.

Cost:---\$17.50 (gratuities included)

Tickets will be sold between services on September 20 and 27 in the Social Hall and outside the Martin Room

**PW Board Meeting**, Sept. 9, 1:00 PM in Library of Church

**Esther Circle** - Monday, September 21, 12:00 PM, Luncheon at home of Esther Porter, 1449 West Park Hills Ave. Bring salad or Vegetable dish and also your ideas for future programs.

**Rebecca Circle** - Tuesday, September 15, 9:30 AM at the home of Noreen Bigelow, 1900 Cliffside 102, Windsong. Please car-pool. Bring your ideas for future programs. Questions? Contact Kay (234-5060).

## Congregational Retreat

**A New Harmony:  
The Spirit, The Earth, and the Human Soul  
A Congregational Retreat  
at Krislund Camp and Conference Center  
October 23-25, 2009**

Church friends and members of all ages are invited to the beautiful surroundings of Krislund to explore the deep relationship between Creator and the created. The weekend will consist of a variety of activities including bible study, nature hikes, camp fires, worship, and contemplative time outdoors. A flexible schedule will accommodate various levels of participation. Spend the entire weekend camping or come for a morning or afternoon. The program will begin on Friday evening and conclude following worship on Sunday morning. Worship will also be held simultaneously in State College at the regular times. More details will be provided in the October PresbyPost. In the meantime, you're encouraged to save the dates!

## Chancel Choir Resumes

Chancel Choir rehearsals begin again on Thursday, September 3, 7:00 PM in the Choir Room. They will begin leading worship again at the 9:00 AM worship service on September 13. Our Chancel Choir is made up of adult singers (which we define as high school age, college age, and older) who love to sing and love to serve the congregation by providing music leadership at one worship service each week. If you love to sing, we encourage you to join us. We will arrange childcare during rehearsals. We sing the best music of many styles, ranging from classical music through contemporary worship and praise. If you are interested in singing, just drop in at our next rehearsal. Child care is available! For more details, contact Ned Wetherald, Director of Music Ministry (238-2422 or [ned@scpresby.org](mailto:ned@scpresby.org)).



## Handbell Choir

The Handbell Choir will resume rehearsals on Tuesday, September 22, 7:15 PM in the Choir Room. Our Handbell Choir is made up of adults (which we define as high school age, college age, and older) who read music a little and can make the commitment to attend rehearsals and worship services when we ring. If you are interested in ringing, please contact Ned Wetherald, Director of Music Ministry (238-2422 or [ned@scpresby.org](mailto:ned@scpresby.org)). We welcome interested ringers, but there are limited positions available, so please check with Ned about openings.



# Krislund News

Dear Presbyterians,

Our Camp Krislund 2009 summer camp has been a remarkable success. We are grateful for the leadership of our new Program Director Art DeVos. Campers and their parents have reported on the summer with joyful enthusiasm. Among many changes instituted this summer:

- ◆ We have revitalized the chaplains program. The chaplains are now responsible for the daily "Nightfest" worship service talks, for daily staff devotions, and for preaching at the Saturday morning worship with all the parents in attendance. This intentional and high profile inclusion of our pastors in the summer camp program will reap an abundant spiritual harvest for years to come and create a closer relationship with our churches.
- ◆ In the dining hall we have seen wonderful improvements. Under Pam DeVos' leadership we have changed to family style dining. We overcame the overwhelming stress on kitchen volunteers by rotating all the campers and summer camp staff through dining hall set-up and clean up responsibilities. Importantly, because we have a large percentage of campers on scholarships, we applied for and were approved to receive food supplies from the Western Pennsylvania Food Bank system which has created extraordinary cost savings.
- ◆ With expertise and volunteers primarily from our State College Church, we now have two new longhouses at Camp. These new housing units replaced the old, canvas tents which had been a mainstay at Krislund. The longhouses and the newly renovated Conestoga wagons improved the camping experience at Krislund this summer.

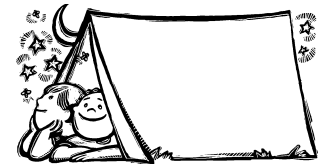
We remember well the cold, dark days in January and February when we sat at our Krislund Board meetings agonizing over a massively out of balance budget and wondering if summer camp was possible. God is good; All the time. We have a much better grasp of our financial management on a day to day basis. We have successfully concluded what many *parents* have told us is the best Krislund Summer Camp ever.

We need your support as we build on the success of summer camp 2009 and bring Camp Krislund up to its potential and our vision. Our financial viability is still tenuous. There is still an enormous amount of infrastructure repair and maintenance work to do. Kevin Lloyd of the State College Church is the new chairperson of the Joint Camp and Conference Committee Property Committee, and is organizing us to face those challenges. Volunteers from our churches are essential to our success.

Camp Krislund belongs to the Presbyterian congregations of our three presbyteries. It is your camp! We are grateful for the abundant support and encouragement so many of you have provided through this difficult year of transition. We believe we have turned the corner; our Camp Krislund is poised to move into a bright new future in service to our churches and our Lord.

In Christ;

Chuck Curley, Pastor State College Church, Huntington Presbytery, JCCC chairperson  
Joy Kaufmann, General Presbyter, Huntington Presbytery  
Charlie Winkelman, Pastor Jersey Shore Church, Northumberland Presbytery  
Bill Knudsen, Executive Presbyter, Northumberland Presbytery  
Harold Nightwine, Elder Derry Church, Carlisle Presbytery  
Mark Englund-Krieger, Executive Presbyter, Carlisle Presbytery



## Krislund Staff & Campers from SCPC

Our own Colin Nickell did an awesome job as a member of the Communications Team at Krislund this summer and we hear that he had an amazing spirit-filled experience living in Krislund's Christian community. The following SCPC youth, who were Krislund campers, also had a fabulous time! Just ask any of them including Sarah Ambrose, Fiona Ashley, Abigail Dewolfe, Emily Dewolfe, Henry Lush, Lydia Malcolm, Grace Manno, Gregory Manno, Garrett Rabian, Janice Rabian, Emily Reichard, Eric Reichard, Jacob VanHook and Michael VanHook.

Enjoying an extra-special time at Krislund were Tanner Nickell, a "re-peater" who went back for a second week, and Emma Sutterlin who was named a "3-peater" for attending three weeks of camp! Rhett McLaren represented the "young at heart" grandparent set when he attended "Grand Camp" with his granddaughter, Fiona Ashley.



## Season's End Thanks

The last worship is done, the last camper has scaled the wall, the final hay ride is complete... the summer camp program has officially ended. As we begin to look back at the summer, we are very pleased with the outcome. We have received numerous letters of thanks from campers and parents for their experience here at Krislund this summer.

This is where we need to be thanking YOU!!! Because of the support that the parents, grandparents, pastors, churches and individuals have given us, we were able to be successful. We need to thank you for sending the campers to Krislund. We need to thank you for volunteering time to Krislund. We need to thank you for sending extra support to Krislund. And most of all, we need to thank you for praying for us.

God has been doing extraordinary things at Krislund. We have been constantly reminded this summer of how wonderful God truly is. We were blessed to have the opportunity to get to know each camper this summer and we wish to thank you for giving us that opportunity. With all our hearts, we say thank you.

Art DeVos, Program Director

# September

## State College Presbyterian Church

Sunday	Monday	Tuesday	Wednesday	Thursday	Friday	Saturday
		<b>1</b> 9:00 S&P In-service 12:15 WPF@Redifer 5:00 Mission Min 7:00 WPF Ice Cream Social @ Pasquerilla Center	<b>2</b> 9:00 S&P In-Service 1:00 Prayer 4:00 Finance 5:00 Taizé 7:00 CFMU 7:00 FISH Ice Cream Social	<b>3</b> 6:00 WPF Dinner 7:00 Chancel Choir 7:00 Scouts	<b>4</b>	<b>5</b> 12:00 Akron @ PSU
<b>6</b> 10:00 Worship 11:00 LOGOS Registration	<b>7</b> Labor Day  Church Building Closed	<b>8</b> 9:00 S&P Meet the Teachers 12:15 WPF@Redifer 7:30 Scoutmaster Council	<b>9</b> 9:00 S&P 1st Day 1:00 Prayer 1:00 PW Board 4:00 Finance 5:00 Taizé 6:00 FISH 7:00 Bible@Handte's	<b>10</b> 6:00 WPF Dinner 6:30 Scout Leaders 7:00 Chancel Choir 7:00 Adult Ed 7:30 Scouts	<b>11</b> 11:30 GIFT  PresbyPost Deadline	<b>12</b> 12:00 Syracuse @ PSU  Chrysalis 8th Grade Overnight @ Elliott's
<b>13</b> 9:00 Worship 10:00 Sunday School 11:15 Worship 6:30 LOGOS Volunteers 7:00 Deacons 7:00 Session	<b>14</b> 7:00 Centering Prayer	<b>15</b> 9:30 Rebecca Circle 12:15 WPF@Redifer 12:30 S&P Staff 5:30 LOGOS Picnic @ Spring Creek Park	<b>16</b> 1:00 Prayer 5:00 Taizé 6:00 FISH 7:00 Bible@Handte's	<b>17</b> 1:00 Bible @ J. Johnson's 6:00 WPF Dinner 7:00 Chancel Choir 7:00 Scouts	<b>18</b> 5:00 Young at Heart  FISH Fall Retreat	<b>19</b> Temple @ PSU  WPF Tailgate  FISH Fall Retreat
<b>20</b> 9:00 Worship 10:00 Sunday School 11:15 Worship  FISH Fall Retreat	<b>21</b> 12:00 Esther Circle 12:15 Membership 7:00 Centering Prayer 7:00 S&P Board 7:30 Scout Troop Committee	<b>22</b> 12:15 WPF@Redifer 4:00 LOGOS Geckos 5:00 LOGOS Chrysalis 6:30 LOGOS Parent Meeting	<b>23</b> 1:00 Prayer 5:00 Taizé 6:00 FISH 7:00 Bible@Handte's	<b>24</b> 6:00 WPF Dinner 7:00 Chancel Choir 7:00 Scouts	<b>25</b> 11:30 GIFT	<b>26</b> 8:00 Iowa @ PSU
<b>27</b> 9:00 Worship 10:00 Sunday School 11:15 Worship 2:00 Court of Honor	<b>28</b> 7:00 Centering Prayer 7:00 Education Min	<b>29</b> 12:15 WPF@Redifer 4:00 LOGOS Geckos 5:00 LOGOS Chrysalis 7:15 Handbell Choir	<b>30</b> 1:00 Prayer 5:00 Taizé 6:00 FISH 7:00 Bible@Handte's	<b>Abbreviations</b>  CFMU = Congregational Fellowship Ministry Unit PW = Presbyterian Women S&P = Stay and Play WPF = Westminster Presbyterian Fellowship		



STATE COLLEGE PRESBYTERIAN CHURCH  
 132 West Beaver Avenue  
 State College, PA 16801

NONPROFIT ORG.  
 U.S. POSTAGE  
 PAID  
 STATE COLLEGE, PA  
 PERMIT NO. 69

RETURN SERVICE REQUESTED

Vol. LI

Number 8

**MINISTRY ASSIGNMENTS OF SESSION MEMBERS • 2009**

Clerk of Session and Nominating Committee Chair  
 Sharon Faulkner

**Building**

*David Kephart, chair*  
*Jim Harbison*

**Congregational Fellowship**

*John McQueary*  
*Linda Margusity*  
*Martha Orland, chair*  
*Ann Tomlinson*

**Mission**

*Katherine Allen, chair*  
*Jeff Gugino*  
*Jan Mahar*  
*Katie Stone*

**Financial Affairs**

*Ken Bachman,*  
*co-chair, Stewardship*  
*Jerry Hartman*  
*Sharon Mortensen, chair*  
*Phil Zimmerman*

**Christian Education**

*Jim DeWolfe*  
*Amy Elliott, chair*  
*Rebecca Lundin*

**Worship**

*Meg Meloy*  
*Virginia Rainey, chair*  
*Dan Sharda*

**Membership**

*Casey Hovick*  
*Wendy Huffard, co-chair*  
*Brenda Lucas, co-chair*  
*Sue Powers*

**Spiritual Formation**

*Geoff Harford*  
*Monica Manning, chair*  
*Sue Powers\**  
*Phil Zimmerman\**

**Personnel**

*Sharon Faulkner*  
*Tom King, chair*  
*Cynthia ManellaNickell*

*\* secondary committee*

**NEWSLETTER  
 STAFF**

←————→  
*Charlotte Baldwin*  
*Lina Hood*  
*Jane Linsky*  
*Brenda Loftus*  
*Winnie O'Halloran*  
*Cheryl Price*  
*Ned Wetherald*